



AUSTRALIA'S ONLY
INTEGRATED MINING
AND ENERGY
INVESTMENT FORUM

THE MINING 2010 RESOURCES CONVENTION

27 - 29 OCTOBER, 2010
HILTON BRISBANE - AUSTRALIA



BRISBANE . . . THE TRADITION CONTINUES


VERTICALEVENTS

GOLD SPONSORS



SILVER SPONSORS



PROGRAMME SPONSOR



MEDIA SPONSOR



BRISBANE . . . THE TRADITION CONTINUES

COMPANY SPONSORS



MANHATTAN
MANHATTAN CORPORATION LIMITED



PANAUST



MINERALS LTD



Southern Uranium Limited



ZAMIA

IN ASSOCIATION WITH



LimeStreet
Capital



STOCKRESOURCE



Professional
Public Relations



PRESENTED BY



- 8.40am **Welcome Address** Stewart McDonald - Managing Director **Vertical Events**
- 8.45am **Queensland Government Address** Stephen Robertson MP - Minister for Natural Resources, Mines and Energy and Minister for Trade
- 9.00am **Market Update** Dominic Kazlauskas - Director, Corporate Finance
Patersons Securities Ltd
- 9.20am **The Global Economy and Outlook for Commodity Prices** Huw McKay - Director and Senior International Economist **Westpac Economics**
- 9.40am **Commodity Markets 2011-2015 - Just Volatile or Effervescent?** Allan Trench - Regional Director **CRU Strategies Australasia**
- 10.00am **Building Momentum in the Emerging Economies** Stephen Bartrop - Managing Director **LimeStreet Capital**
- 10.20am **MORNING TEA**
- 11.00am **Queensland's Exploration Initiatives** Dave Mason - General Manager
Geological Survey of Queensland, DEEDI
- 11.15am **Future Directions of Energy Exploration in Queensland** Peter Green - Manager, Energy Geoscience **Geological Survey of Queensland, DEEDI**
- 11.30am **Australia's Onshore Energy Security Program: What Have We Learnt?**
Dr James Johnson - Chief of Division and Deputy CEO **Geoscience Australia**
- 11.55am **Mapping through Cover with Regional AEM Surveys** Dr Nick Williams - Manager, Geophysical Projects **Geoscience Australia**
- 12.15pm **Ivanhoe Australia Ltd** Peter Reeve - Managing Director and CEO
- 12.35pm **LUNCH**
- 1.40pm **Krucible Metals Ltd** Tony Alston - Managing Director
- 2.00pm **Conquest Mining Ltd** John McKinstry - General Manager, Operations
- 2.20pm **Deep Yellow Ltd** Patrick Mutz - Managing Director
- 2.40pm **Dragon Mining Ltd** Peter George Cordin - Executive Chairman
- 3.00pm **AFTERNOON TEA**
- 3.40pm **Navigator Resources Ltd** David Hatch - Managing Director
- 4.00pm **Rex Minerals Ltd** Steven Olsen - Managing Director
- 4.20pm **Mincor Resources NL** Stephen Cowle - Chief Operating Officer
- 4.40pm **Galilee Energy Ltd** Glenn Haworth - Chief Executive Officer
- 5.00pm **Cape Lambert Resources Ltd** Tony Sage - Executive Chairman
- 5.20pm **Conference Drinks in the Exhibition Area - Sponsored by Tetra Tech Australia**
- 6.30pm **Patersons Cocktail Function at the Jade Buddha Shadow Lounge**

11.35am

Dynasty Metals Australia Ltd Malcolm Carson - Executive Director, Technical

11.55am

Corvette Resources Ltd Jason Bontempo - Managing Director

12.15pm

Base Resources Ltd Tim Carstens - Managing Director

12.35pm

LUNCH

1.40pm

Association of Independent Retirees (A.I.R.) Ltd

Helen Sava - Queensland Division Director

2.00pm

Cloncurry Metals Ltd Simon Finnis - Managing Director

2.20pm

Auzex Resources Ltd John Lawton - Managing Director

2.40pm

Sirius Resources NL Dr Mark Bennett - Managing Director

3.00pm

AFTERNOON TEA

3.40pm

D'Aguilar Gold Ltd Nicholas Mather - Managing Director

4.00pm

Impact Minerals Ltd Dr Michael Jones - Managing Director

4.20pm

Breakaway Resources Ltd David Hutton - Managing Director

4.40pm

Altona Mining Ltd Alistair Cowden - Managing Director

5.00pm

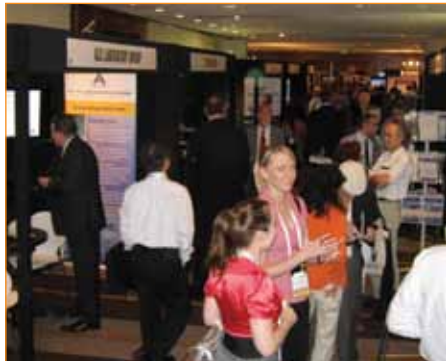
Diatreme Resources Ltd Anthony Fawdon - Chairman and CEO

5.20pm

Conference Drinks in the Exhibition Area - Sponsored by Tetra Tech Australia

6.30pm

Patersons Cocktail Function at the Jade Buddha Shadow Lounge



- 8.45am **National Stock Exchange of Australia** Michael Cox - Chairman and CEO
- 9.05am **Bass Metals Ltd** Michael Rosenstreich - Managing Director
- 9.25am **New Information, New Opportunities** Dr Geoff Green - Managing Geologist **Mineral Resources Tasmania**
- 9.35am **New Data, New Potential** Cameron Ricketts - Manager, Minerals and Land Use Assessment **Geological Survey of NSW**
- 9.45am **Australian Bauxite Ltd** Ian Levy - Chief Executive Officer
- 10.05am **Tanami Gold NL** Graeme Sloan - Managing Director / CEO
- 10.25am **MORNING TEA**
- 10.55am **Centaurus Metals Ltd** Darren Gordon - Managing Director
- 11.15am **Ironclad Mining Ltd** Ian Finch - Managing Director
- 11.35am **South Australia's New PACE 2020 Initiative** Dr Ted Tyne - Director, Minerals Resources Group, Primary Industries and Resources SA
Government of South Australia
- 11.45am **New Base Metal and Gold Exploration Districts in WA** Don Flint - Acting Assistant Director Resources **Geological Survey of Western Australia**
- 11:55am **Troy Resources NL** Paul Benson - Chief Executive Officer
- 12:15pm **Southern Uranium Ltd** John Anderson - Managing Director
- 12.35pm **LUNCH**
- 1.35pm **Bendigo Mining Ltd** Rod Hanson - Managing Director and CEO
- 1.55pm **Discovery Opportunities in Victoria - 3 & 4D Solutions** Paul McDonald - Acting Director **GeoScience Victoria**
- 2.05pm **Newly Identified Base Metals, Gold and Uranium Mineral Systems and Exploration Opportunities in the Northern Territory** Ian Scrimgeour - Director **Northern Territory Geological Survey**
- 2:15pm **Emmerson Resources Ltd** Rob Bills - Managing Director and CEO
- 2.35pm **Azumah Resources Ltd** Stephen Stone - Managing Director
- 2.55pm **Image Resources NL** George Sakalidis - Managing Director
- 3.15pm **AFTERNOON TEA**
- 3.50pm **Venture Minerals Ltd** Hamish Halliday - Managing Director
- 4.10pm **Zamia Metals Ltd** Dr Kenneth Maiden - Executive Chairman
- 4.30pm **Mungana Goldmines Ltd** Pat Scott - Managing Director
- 4.50pm **Exco Resources Ltd** Michael Anderson - Managing Director
- 5.10pm **Integra Mining Ltd** Christopher Cairns - Managing Director
- 5.30pm **Integra Mining and hrTesting Cocktail Function held in the Exhibition Area**

- 8.45am **Superior Resources Ltd** Ken Harvey - Managing Director
- 9.05am **Chesser Resources Ltd** Dr Rick Valenta - Managing Director
- 9.25am **MM Mining Ltd** Hamish Collins - Managing Director
- 9.45am **Southern Cross Goldfields Ltd** Glenn Jardine - Managing Director
- 10.05am **Coppermoly Ltd** Denis O'Neill - Chief Consulting Geologist
- 10.25am **MORNING TEA**
- 10.55am **Pioneer Resources Ltd** David Crook - Managing Director
- 11.15am **Australian-American Mining Corporation Ltd** Jim Malone - Executive Chairman
- 11.35am **Southern Gold Ltd** Nanette Anderson - Managing Director
- 11:55am **MetroCoal Ltd** Mike O'Brien - Chief Executive Officer
- 12:15pm **PepinNini Minerals Ltd** Norman Kennedy - Managing Director
- 12.35pm **LUNCH**
- 1.35pm **Laramide Resources Ltd** Robert Sowerby - Project Manager
- 1:55pm **Minotaur Exploration Ltd** Dr Tony Belperio - Exploration Director
- 2:15pm **Aviva Corporation Ltd** Lindsay Reed - Chief Executive Officer
- 2:35pm **Syndicated Metals Ltd** Russell Davis - Managing Director
- 2:55pm **Drake Resources Ltd** Dr Bob Beeson - Managing Director
- 3:15pm **AFTERNOON TEA**
- 3.50pm **Kentor Gold Ltd** Simon Milroy - Managing Director
- 4.10pm **Alcyone Resources Ltd** Andrew King - Managing Director
- 4.30pm **Richmond Mining Ltd** Howard Dawson - Chairman
- 4.50pm **Renaissance Minerals Ltd** Justin Tremain - Managing Director
- 5.10pm **Fe Ltd** Mark Gwynne - Executive Officer
- 5.30pm **Integra Mining and hrltesting Cocktail Function held in the Exhibition Area**



- 8.50am **Meridian Minerals Ltd** Jeremy Read - Managing Director
- 9.10am **Ramelius Resources Ltd** Ian Gordon - Chief Executive Officer
- 9.30am **Encounter Resources Ltd** Will Robinson - Managing Director
- 9.50am **PanAust Ltd** Dr Fred Hess - Executive General Manager, Southeast Asia
- 10.10am **Reed Resources Ltd** Chris Reed - Chief Executive Officer
- 10.30am **MORNING TEA**
- 11.00am **Catalpa Resources Ltd** Stuart Pether - Chief Operating Officer
- 11.20am **Kagara Ltd** Kim Robinson - Executive Chairman
- 11.40am **Hazelwood Resources Ltd** Terry Butler-Blaxell - Managing Director
- 12.00pm **Cauldron Energy Ltd** Terry Topping - Managing Director
- 12.20pm **Metallica Minerals Ltd** Andrew Gillies - Managing Director and CEO
- 12.40pm **LUNCH**
- 1.30pm **Carpentaria Exploration Ltd** Nick Sheard - Executive Chairman / CEO
- 1.50pm **Manhattan Corporation Ltd** Alan J. Eggers - Executive Chairman
- 2.10pm **Western Areas NL** Charles Wilkinson - General Manager of Exploration
- 2.30pm **The Coming Mining Boom** James Dines - Editor ***The Dines Letter***
- 3.00pm **Conference Close**

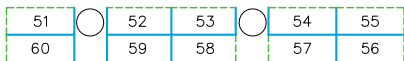
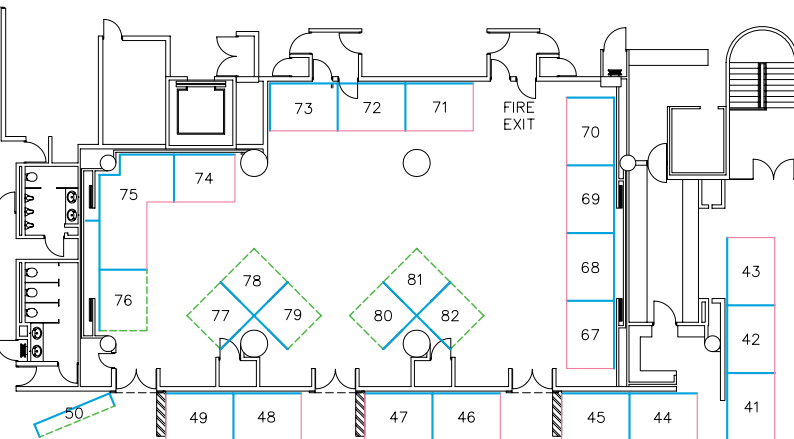




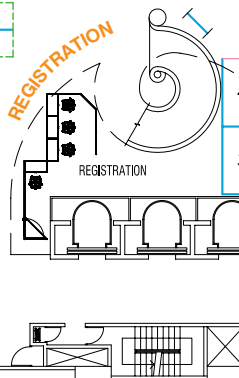
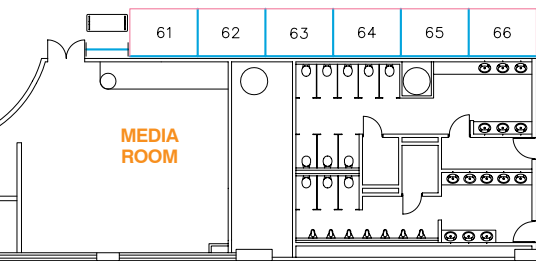
Project Evaluation

- 8.50am **General Overview of Project Evaluation** Andrew Newell - Principal Process Consultant *Pincock Allen and Holt Australia*
- 9.10am **VALMIN Code and What it Means** Jeames McKibben - General Manager, Corporate Services *Xstract Mining Consultants*
- 9.30am **The JORC Code - An Update** Alice Clark - Consultant and Owner, *CdeK Geological & Mining Services*; Elect President, *AusIMM*; Deputy Chairman, *Joint Ore Reserves Committee (JORC)*
- 9.50am **Application of Mining Studies in Project Evaluation** Peter Myers - Group General Manager, Mining and Principal Consultant *Snowden Mining Consultants*
- 10.10am **Question Forum**
- 10.30am **MORNING TEA**
- 11.00am **Overview of Project Evaluation Methodologies** Manish Garg - Principal Consultant Corporate Services *Xstract Mining Consultants*
- 11.20am **Integrating Project Evaluation** Andrew Price - Director, Peter Dunn - Partner *PricewaterhouseCoopers*
- 11.40am **Project Evaluation from a Bankers Perspective** Peter Williams - Managing Director, Natural Resources *National Australia Bank*
- 12.00pm **What are Lawyers Concerns in Evaluating Projects with Case Studies** Scott Standen - Partner *Hynes Lawyers*
- 12.20pm **Question Forum**
- 12.40pm **LUNCH**

BRISBANE . . . THE TRADITION

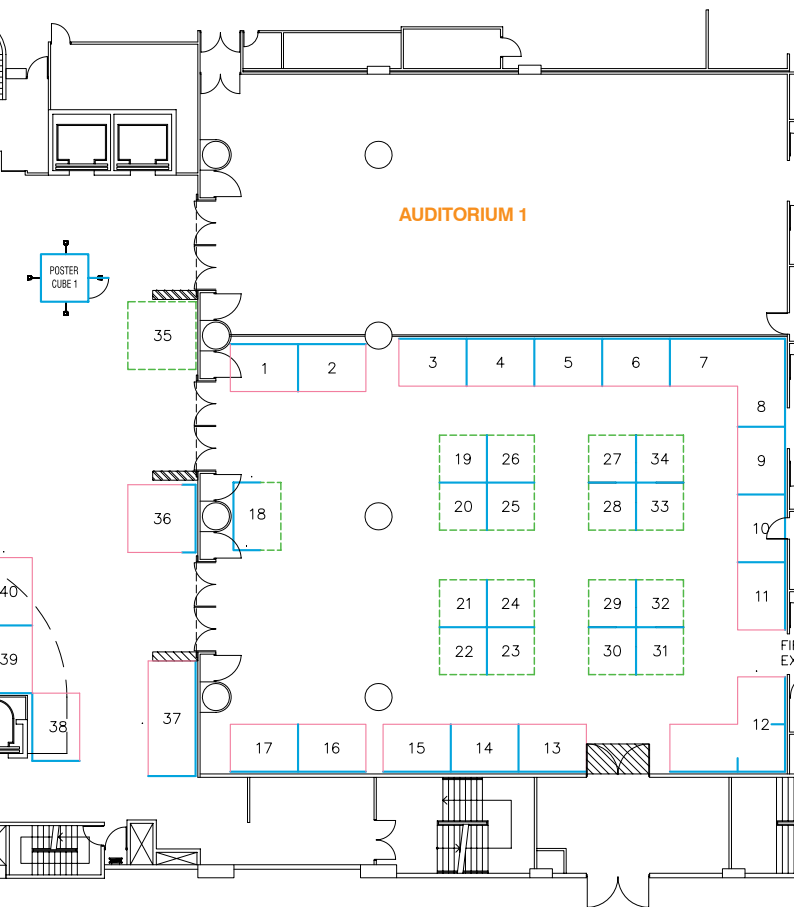


◀ AUDITORIUM 2



CONTINUES

M MINING 2010





**AUSTRALIA'S ONLY
INTEGRATED MINING
AND ENERGY
INVESTMENT FORUM**



MINING 2000 PTY LTD ABN: 86 083 623 358

PO Box 1153 Subiaco WA 6904 - Suite 15, 186 Hay Street, Subiaco WA 6008

T: (08) 9388 2222 F: (08) 9381 9222 E: info@verticalevents.com.au W: www.verticalevents.com.au